

LIFE IN LINDSBORG, KS

Relocation Guide



LAGOM

Not too much and not too little.
Just right.

It's our secret for enjoying balance
in every aspect of life—from work
and leisure to family and food, and
everything in between. Lagom is
moderation, balance, and equality.



It's the Swedish lifestyle, envied by the world.
And it's found right here in Lindsborg, Little Sweden USA.

So to you, we extend a *"Välkommen"* to find balance. Live
an intentional life. A life that's just right.

Welcome home to Lindsborg.
WE'VE BEEN WAITING FOR YOU.



LINDSBORG

By the Numbers



A SNAPSHOT

POPULATION

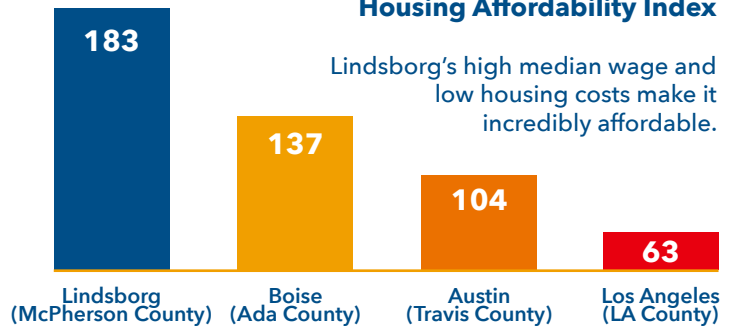
3,290

MEDIAN AGE

34.4

Housing Affordability Index

Lindsborg's high median wage and low housing costs make it incredibly affordable.



TRAVELING



AVERAGE COMMUTE TIME

14.5 minutes

Proximity to airports - 20 minutes drive to daily non-stop flights to Denver and Chicago

Approx. 1 hour drive to 29 non-stop flights to national destinations

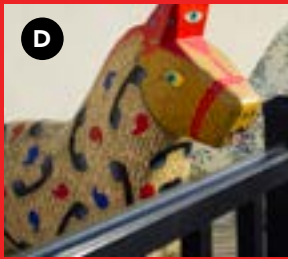
MEDIAN TEMPERATURES

AVERAGES IN °F

	JAN	FEB	MAR	APR	MAY	JUN	JUL	AUG	SEP	OCT	NOV	DEC	
☀	41	46	56	67	76	87	93	91	82	70	56	43	☀
❄	18	21	30	39	50	62	67	65	55	43	30	19	❄



A



D



B



E



C



F

ATTRACTIONS

A CORONADO HEIGHTS

 Winner in 8 Wonders of Kansas!

Coronado Heights was named for Francisco Vasquez de Coronado, who is believed to have visited central KS in 1541. The southern-most bluff in a series of seven known as the Smoky Hills, Coronado Heights is 2.4 miles northwest of Lindsborg on Coronado Heights Road. Perfect for destination weddings, photography enthusiasts, artists, flying kites, hiking, or biking the off-road trails. Open daily, no admission. (See pull-out map for directions.)

B HÖGLUND DUGOUT

Gustaf and Maria Höglund, a young couple from Fernebo, Sweden, created their first home in a simple pit, or dugout, estimated at 6 ft. x 12 ft. in the summer of 1868 and used their wagon as a roof. The dugout is open for public visits 2.1 miles south on 12th Avenue from the entrance to Coronado Heights. Look for an opening in the tree line and a low silver iron rail fence on the east side of the road. Walk east approximately 50 feet to the dugout. There are no directional signs. Open daily, no admission. (See pull-out map for directions.)

C PUBLIC ART Self-Guided Tour

Explore some of the city's fine artwork of contemporary outdoor sculptures, paintings, wind vanes, iron works and tile installations. The pop art Wild Dala herd scattered throughout remains a favorite. Tour maps are available at the Certified Travel Information Center at 114 N. Main.

D HERD OF WILD DALA HORSES

Cast in a large fiberglass form, the Wild Dala Herd are pop art icons depicting a contemporary vibe of daily life. Unconventionally decorated by local artists and scattered throughout the city, whether you use the map or have an unexpected chance encounter, the Wild Dalas never fail to surprise and amuse. A brochure and map are in the Certified Travel Information Center at 114 N. Main.

E BLACKSMITH COFFEE SHOP & ROASTERY

Located in the historic Holmberg & Johnson Blacksmith & Wagon Shop, Blacksmith Coffee Shop & Roastery specializes in exotic single-origin Arabica coffee. The shop offers a light breakfast and lunch menu with a variety of house-made pastries, espresso drinks, pour-over coffee, and tea.

Open Monday - Saturday (hours vary by season).

122 N. Main | 785-212-6077 | blacksmithcoffee.com

F PRAIRIE TRAIL BYWAY

The Prairie Trail, spanning 80 miles of central Kansas, offers a variety of activities for the adventurous traveler. Centrally located along the byway, Lindsborg is the perfect place to spend an evening or two. Spend the day, exploring Mushroom Rock, see bison and elk, visit a motorcycle museum, the Faris Caves, a castle and a dugout. Relive the Old West at Fort Harker and Ellsworth, a once wicked cowtown of Kansas.

travelks.com/ksbyways/prairie-trail/

MUSEUMS



MCPHERSON COUNTY OLD MILL MUSEUM

★ *Finalist in 8 Wonders of Kansas!*

The Old Mill Museum preserves the early heritage of McPherson County, collecting, researching, exhibiting and interpreting these invaluable materials. The museum also offers access to historical county records and resources for tracing Swedish ancestry. Call ahead for archive appointments.

SMOKY VALLEY ROLLER MILLS

Built in 1898, the mill is in operation every year during Millfest, held on the first weekend in May. Along with the mill, the museum includes:

HERITAGE SQUARE

A collection of historic buildings consisting of the 1904 World's Fair Swedish Pavilion, West Kentuck one-room school, the 1879 Kansas Pacific/Union Pacific Railroad Depot, Bethany Academy, the Erickson Brothers workshop and Sweadal (first McPherson County Courthouse building). Hours of the museum are Monday-Saturday, 9:00 am-5:00 pm.

Admission: Adults \$2 | Ages 6-12 \$1 | 5 years & under free.
120 Mill • 785-227-3595 • oldmillmuseum.org



BIRGER SANDZÉN MEMORIAL GALLERY

🏆 *Winner in 8 Wonders of Kansas! Art*

The focal point of the gallery's art collections is the work of Swedish-born artist Birger Sandzén. It houses the largest and most extensive world-wide collection of Sandzén paintings, prints, drawings and watercolors. Along with guest artists and special traveling exhibitions, the gallery hosts lectures, chamber music concerts, docent tours and educational programs. The gallery seeks to continue the work of Sandzén by encouraging developing artists as well as educating the next generation of visitors. Hours are 10:00 am - 5:00 pm Tuesday-Saturday; 1:00 - 5:00 pm Sunday.

Admission/Suggested Donation \$5.

401 N. First | 785-227-2220 | sandzen.org



RED BARN STUDIO

★ *Finalist in 8 Wonders of Kansas!*



The Red Barn Studio was the working studio of professional artist and craftsman Lester Raymer (1907-1991). It is filled with Raymer's art and handiwork from painting and prints to ceramics and metalwork, from woodcarving and stitchery, to furniture and jewelry. Raymer's work

was influenced by his love for the world's greatest painters, especially the Spanish masters, the Southwest and Mexico, religious symbolism and folk art.

Hours are 10:00am-5:00pm Tuesday - Friday and 1:00 pm-5:00 pm Saturday and Sunday. Suggested Donation \$5.

212 S. Main | 785-227-2217 | redbarnstudio.org

GALLERIES & STUDIOS



HEMSLÖJD—DALA HORSE FACTORY

 *Winner in 8 Wonders of Kansas! Commerce*

Hemslöjd (Swedish for handicraft) is an "Adventure in Swedish Tradition." Browse the gift shop, tour the workshop and visit with the folk-artist or craftsmen as they make Dala horse signs and other specialties.

201 N. Main | 800-779-3344 | hemslojd.com

MINGENBACK ART CENTER GALLERY

The Mingenback Art Center Gallery on the Bethany College campus hosts student shows and visiting artists.

Corner of Olsson and Second | 785-227-3380 ext. 8244



SMALL WORLD GALLERY

See through the eyes of world-traveled National Geographic photographer Jim Richardson at his Small World Gallery. Also view IBISwoman Jewelry by Kathy Richardson—a jewelry designer who works with unusual and vintage metals, glass and semi-precious stones.

127 N. Main | 785-227-4442 | smallworldgallery.net

COURTYARD GALLERY & 350 DEGREES BAKERY

What could be better than an ever-changing art gallery coupled with a bakery that features made-from-scratch Swedish baked goods, cakes, cookies, breads and pies? Bakery hours are Wed. - Sat., 8:30 am - 3:00pm.

125 N. Main |  Courtyard Gallery

 350 Degrees LLC | 785-227-3007

SCHOOLS

ANATOLY KARPOV INTERNATIONAL SCHOOL OF CHESS

Seven-time World Chess Champion Anatoly Karpov visited Lindsborg in December of 2002. He was looking for a quiet place to train with Grandmaster Garry Kasparov. Grandmaster Alex Onischuk had played in several international tournaments in Lindsborg, so he suggested that it would be a good place to train. Karpov was impressed with the town and its people, so it was no surprise when he decided to establish his first U.S. chess school in Lindsborg. Karpov has established schools in 15 countries.

The Karpov Chess School hosts chess camps, competitions and social chess. All levels of play are welcome at social chess. Call for more information.

106 S. Main | 785-227-7555
anatokarpovchessschool.org

BETHANY COLLEGE

Bethany College is a college of the Evangelical Lutheran Church in America (ELCA). Swedish-Lutheran settlers worked with the Rev. Dr. Carl A. Swensson, Bethany's founder, to establish Bethany Academy on October 15, 1881, in the sacristy of Bethany Lutheran Church. Ten students attended the first class.



Today Bethany is a small, private college providing students personal attention within a caring community. The student body is highly engaged in learning both inside and outside the classroom. Bethany offers a wide array of academic programs. Its education, art, music, biology, chemistry and campus ministry programs are well-known and highly regarded and its athletic teams are serious competitors that have won many NAIA awards.

335 E. Swensson | 785-227-3380 | bethanylb.edu

SAY HELLO TO

MICHAEL & MARISA DAVIS



Michael and Marisa Davis dreamed of leaving California for a more balanced lifestyle for ten years. Then, they came to Lindsborg to help their daughter and her husband move. Within hours, they were calling the landlord and reserving an apartment for themselves.

Now, Michael, Marissa, their two daughters, two grandkids, and Michael's parents all call Lindsborg home.

"We've had friends and family from California come and visit us, and they can't believe how lucky we were to find such a gem in Kansas." Michael Davis

They eat together every night, taking turns cooking and hosting. They feel like they're closer than they've ever been because living in Lindsborg has allowed them to focus on what's important: family and community. The change of pace has improved his health, too.

"I had some medical issues in California revolving around stress. Since moving here, I haven't had any of those issues. My stress level is way down."

The Davis family are planting roots in Lindsborg. It would not have been possible for them to build their dream house in California, but because they sold their smaller property and moved, they were able to buy a large piece of land and make it happen.



"This is our forever home."



WHERE TO LIVE

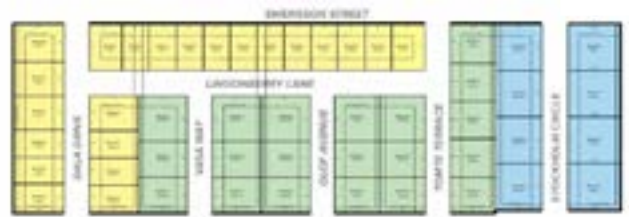


BUILD YOUR DREAM HOME AT STOCKHOLM ESTATES

Build the house you want in Lindsborg. Stockholm Estates offers 3 lots sizes to match your desired home and yard size.

FEATURES:

- Traditional, expanded, and estate home lots
- No special assessment taxes
- Use the builder of your choice



Homes starting in the **\$150's!**

[LEARN MORE](#)

LIVE IN HISTORIC DOWNTOWN

Lindsborg's historic neighborhoods are within walking distance to parks, downtown restaurants and shops, and Smoky Valley schools.

LUXURY SENIOR LIVING AT BETHANY VILLAGE

Experience a life rich in friends, culture, and community. Bethany Village offers three options to empower seniors to do what they do best: independent living, full-service living, and continued care and rehabilitation.

BETHANY+VILLAGE

[LEARN MORE](#)

LINDSBORG
REALTORS

ROLANDER AGENCY
785.227.2929

LINDSBORG REALTY
785.227.2913

HARTTER AGENCY
785.227.2711

LINDSBORG
BANKS

BANK OF TESCOTT
785.227.8830

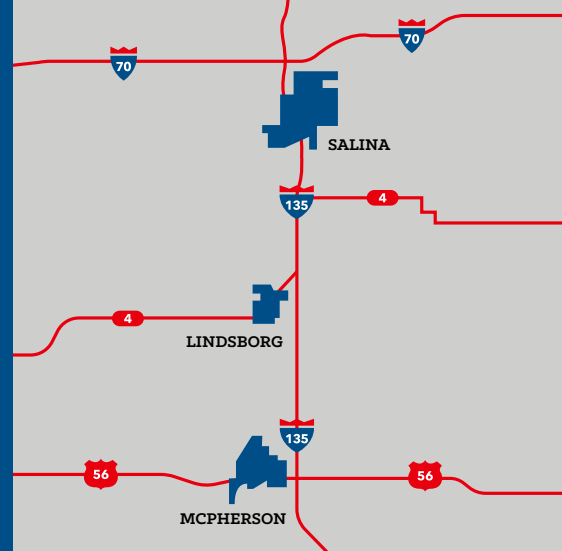
FARMERS STATE BANK
785.227.3321

FIRST BANK KANSAS
785.227.3344

PEOPLES BANK AND TRUST
785.227.2991

JOBS

Lindsborg sits in between two of the region's industrial powerhouses: **McPherson and Salina**. Benefiting from Lindsborg's central location, many residents appreciate the option to build a career with a global company, while enjoying a short drive (15 minutes from each!) to be home in time for dinner each night.



TOP EMPLOYERS

SALINE COUNTY

- Tony's Pizza
- Salina Regional Health Center
- USD 305
- Exide
- Great Plains Manufacturing
- Philips Lighting
- City of Salina
- Saline County
- Eldorado National

[SEARCH JOBS](#)

MCPHERSON COUNTY

- Pfizer
- CHS
- The Bradbury Company
- Viega
- The Grasshopper Co.
- Moundridge Manufacturing
- Johns Manville
- Central Plastics
- Piping Technology Company
- Ferguson Production
- Tortilla King

[SEARCH JOBS](#)



ENTREPRENEURS WANTED

Always dreamed of starting your own business? Lindsborg offers e-community loans to help with up to 60% of the financing.

[LEARN MORE](#)

SCHOOLS

With high graduation rates and experienced teachers, Lindsborg has some of the highest performing schools in the area. Choose from a traditional in-person setting, or opt for a virtual charter school. Plus, there are seven higher education learning opportunities within a 20-mile radius.

SMOKY VALLEY UNIFIED SCHOOL DISTRICT STATS:

Top Rated School District in McPherson County

- Graduation Rates: **95%**
- Number of Students K-12: **1,454**
- Student/Teacher Ratio: **22:1**
- Exceptional strings and orchestra programs

SMOKY VALLEY VIRTUAL CHARTER SCHOOL STATS:

- Graduation Rates: **80%**
- Number of virtual students: **615**

REGIONAL HIGHER EDUCATION OPPORTUNITIES:

- Bethany College
- Kansas Wesleyan University
- K-State Salina
- Brown Mackie College Salina
- Salina Area Technical School
- McPherson College
- Central Christian College

LINDBORGH SWEDISH FOLK DANCERS

The Lindsborg Swedish Folk Dancers is a group of high school dancers and musicians dedicated to promoting the study and appreciation of traditional Swedish folk dance and music. This program allows them to take a two week trip to Sweden while in High School.





HEALTH & WELLNESS

With three high-quality hospitals within a 20-minute drive, Lindsborg can provide care with a personal touch. All three hospitals have lower than average time spent in the emergency room.

LINDSBORG COMMUNITY HOSPITAL *Critical Access Hospital*

- Median time spent in the emergency department before leaving visit: _____ **95 minutes**
- **2020 Guardian of Excellence Award** winner by Press Ganey (95th percentile or above for performance in Patient Experience)

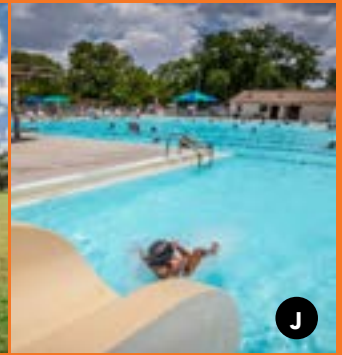
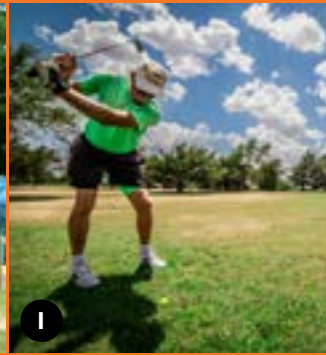
MCPHERSON CENTER FOR HEALTH *Acute Care Hospital*

- Emergency department: 0% left without being seen
- Median time spent in the emergency department before leaving visit: _____ **105 minutes**
- Patient to nurse ratio: 6:1+a CNA (Avg is 8:1)

SALINA REGIONAL HEALTH CENTER *Acute Care Hospital*

- Median time spent in the emergency department before leaving visit: _____ **122 minutes**
- **Baby-Friendly Designation** - 2020 (International designation for the highest standards of care for breastfeeding mothers and their babies)
- **Most Wired® Winner** – 2017 (Designates the technological pieces are in place to drive efficiencies and improve both care and the patient experience)





PARKS & RECREATION

G VÅLKOMMEN TRAIL

Using Swedish pioneer thrift and ingenuity, Lindsborg took the abandoned Missouri-Pacific and Union Pacific rail beds and converted them into a 3.25-mile, all-weather bicycle and pedestrian trail. The trail, which meanders through the city, is free for public use year round. Enjoy the sights and sounds of nature as you walk across the newly refurbished railroad bridge. See pull-out map for location.

H VIKING VALLEY PLAYGROUND

In Swensson Park, on the 400 block of N. Main, this one-of-a-kind playground was built by over 900 volunteers in four days with donated tools. Local schoolchildren were consulted and their ideas were included in the overall design of the project. Highlights of Viking Valley include a tree house, rocket ship, climbing wall and a castle.

SKATE PARK

Adjacent to the Vålkommen Trail and on the 300 block of N. Kansas, the Swede Sk8 Park is open seven days a week from dawn to dusk. Swede Sk8 offers 3,456 square feet of skating including ramps, rails and fun boxes. Full pads and helmets recommended.

I GOLF

Enjoy one of the hidden treasures of the Smoky Valley with new and enhanced play areas of lush greens and established rough.

The Lindsborg Golf Course is a 64 acre, 9-hole municipal course located 1½ miles east of town. It features 2,682 yards of golf from the longest tees with a par of 34. Par for 18 holes is 69 and additional tee boxes are available for the back nine. Built by Hilding Jaderborg, the course is open year round, weather permitting and walk-ons are welcome. In addition to a fully stocked club house, new club cart rentals and cart sheds are available.

1541 Svensk Rd. | 785-227-2244 | lindsborgcity.org

J POOL

The Lindsborg Municipal Swimming Pool's grand attraction is called, appropriately enough, "Thor's Revenge." Thunder down this 153' long waterslide or jump off the 5 and 10 meter diving boards. Other amenities include 6 lap swimming lanes and private parties can be accommodated from most evenings. The kiddie pool features zero depth entry, water spouts and is available for children 6 and under. Also an on-site sand volleyball court can be reserved for times beyond regular pool hours.

520 S. First | 785-212-0071 | lindsborgcity.org

Private party information: 785-227-3355

MESSIAH LABYRINTH & PEACE PARK

Following the guided path, one loses track of direction and the outside world, thus allowing for prayer, meditation and restfulness. Open to the public from dawn to dusk every day, the Messiah unicursal labyrinth is designed to aid in one's spiritual journey. Located at 402 N. First, north of the Messiah Lutheran Church on Bethany College campus.

EVENTS CALENDAR

Real Men Sing	January	888-227-2227
Chocolate Lover's Affair	Saturday before Valentine's Day	888-227-2227
Våffeldagen (International Waffle Day)	Third Saturday in March	888-227-2227
Handel's Messiah	Palm Sunday & Easter Sunday	785-227-3380 x8137
Bach's St. Matthew Passion	Good Friday	785-227-3380 x8137
Lindsborg In Bloom	Fourth Saturday in April	888-227-2227
City Band Concerts	May, June & July	888-227-2227
Millfest	First weekend in May	785-227-3595
Midsummer's Festival	Third weekend in June	888-227-2227
Midsummer's Kubb Tournament	Third weekend in June	888-227-2227
Broadway RFD Outdoor Theatre Production	Third and fourth weekend in July	888-227-2227
Smoky Valley Classic Car Show	First Saturday in August	888-227-2227
Street Dance	August	888-227-2227
Bethany College Alumni & Friends Golf Tournament	October	785-227-3380
Sandzén Gallery Concert Series	Event calendar at sandzen.org/program-event-calendar/	785-227-2220
Golf Tournament	October	888-227-2227
Svensk Hyllningsfest	October 8 & 9, 2021 (odd years only)	888-227-2227
Coronado Heights Run 15K/5K/1 Mile Run	October	888-227-2227
Falun Classic 34-Mile Bicycle Ride	October	888-227-2227
Santa Comes To Lindsborg	Saturday after Thanksgiving	888-227-2227
Artists' Studio Open House	First Saturday in December	785-227-2217
Sandzén Holiday Gift Show	November - December	785-227-2220
Old Fashioned Christmas	First & second Saturday in December	785-227-3595
Jultide Concert At Bethany College	First Sunday in December	785-227-3380
Lucia Day	Second Saturday in December	888-227-2227
Julotta		
Bethany Lutheran Church	December 25	785-227-2167
Evangelical Covenant Church of Lindsborg	December 25 (odd years only)	785-227-2447
Annandag Jul Swedish church service Bethany Lutheran Church	December 26	785-227-2167

LODGING

LINDSBORG VACATION RENTALS

K VETEHUSET

Vetehuset (Swedish for “the wheat house”) holds two spacious and luxurious studio apartments. The open-concept studio apartments feature full kitchens, a covered carport and a private elevator – all elements that set the Vetehuset apart from other lodging choices.

105 N. Main, 2nd floor

TRÄDHUSET

Located on the second-floor of a carriage house, Trädhuset (Swedish for “the tree house”), is Lindsborg’s first vacation rental. Here you’ll find a roomy, open-concept studio apartment with a full kitchen, a covered carport and a furnished deck shaded by mature trees.

110 1/2 N. Main | 855-TRAD-HUS | 855-872-3487

LindsborgVacationRentals.com

 Lindsborg Vacation Rentals

L THE ROSBERG HOUSE

Originally built as a private residence in 1885 for the Carl Rosberg family. Located across the street from Lindsborg’s charming & historic downtown, this B&B offers five guest rooms or full-house vacation rental with a two-night stay. Modern amenities, private bath with each room, swimming pool and hot tub available to guests.


103 E. State St. | 785-250-0508 | rosberg.house

 RosbergHouse Bed & Breakfast

M DRÖM SÖTT (SWEET DREAMS) INN

Formerly the Swedish Country Inn, the fully renovated Dröm Sött Inn is kindred to small inns found throughout the countryside in Sweden. The 18 rooms in this historic inn feature furnishings imported from Sweden. The traditional Swedish breakfast buffet served each morning in the dining room completes your overnight stay and is also open to the public. WiFi.

112 W. Lincoln | 800-231-0266 / 785-227-2985


sweetdreamsinn.com |  Drom Sott - Sweet Dreams Inn

OLD MILL CAMPGROUND

Campsites are generally on a first-come, first-served basis. Reservations are recommended for special holidays and events. A shelter is available for picnics and gatherings. For more information, please call 785-227-3595 or email oldmillmuseum@hotmail.com.

VIKING MOTEL

The Viking Motel is a quiet, affordable motel near two restaurants and is a convenient retreat for the tired traveler. Pet friendly.

446 N. Harrison | 785-227-3336 |  Viking Motel

CORONADO MOTEL & RV PARK

The Coronado Motel offers breakfast, BBQ area, cable, WiFi, individual climate control and pet-friendly rooms.

The Coronado also has space for RVs, with shaded lots and full hookups with 30/50 amp service. Group and long-term rates are available.

318 N. Harrison | 785-227-3943

 Coronado Motel & RV Park

THE RESPITE

This vacation is available for short-term stays as a retreat to relax, unwind, and refocus. The Respite is a 1 bed / 1 bath house that rents with a 2-night min. stay on weekends.

Amenities included: bed and bath linens, continental breakfast, jetted spa, on-site laundry, free WIFI and printer/scanner/copier, WIFI enabled movie and TV services, wood stove and firewood (Oct. – April), BBQ grill and smoker, horseshoe pits, treehouse. Pets allowed outside, in fenced yard.

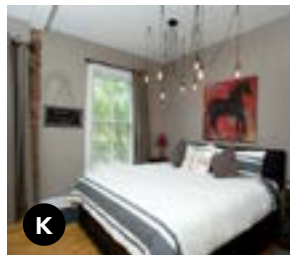
324 S. Main St. | 785-227-0639 | therespiteretreat.com

The Respite Vacation Rental

DAN’S RV PARK

Full hookup, 20/30/50 amp service, shower house, laundry, basic cable, phone hookup, WiFi.

236 S. Cole | 785-212-0781 | dansrvpark.com



NAVIGATING LINDSBORG

SCHOOLS

- 2 Bethany College
- 9 Lindsborg Middle School
- 10 Smoky Valley High School
- 12 Soderstrom Elementary

PARKS & RECREATION

- 1 Sports Complex
- 5 Swensson Park
- 6 Bandshell
- 8 Skate Park
- 13 Carlson Park
- 19 Riverside Park
- 21 Swimming Pool
- 23 Old Mill Campgrounds
- 24 Välkommen Trail
- 25 Meadowlark Trail
- 26 Lindsborg Golf Course

SHOPPING

- 16 Downtown Shops

17 Business District STUDIOS & GALLERIES

- 3 Sandzén Memorial Art Gallery
- 18 Red Barn Studio

MUSEUMS & ATTRACTIONS

- 20 Heritage Square
- 22 Old Mill Museum
- 28 Höglund Dugout
- 29 Coronado Heights

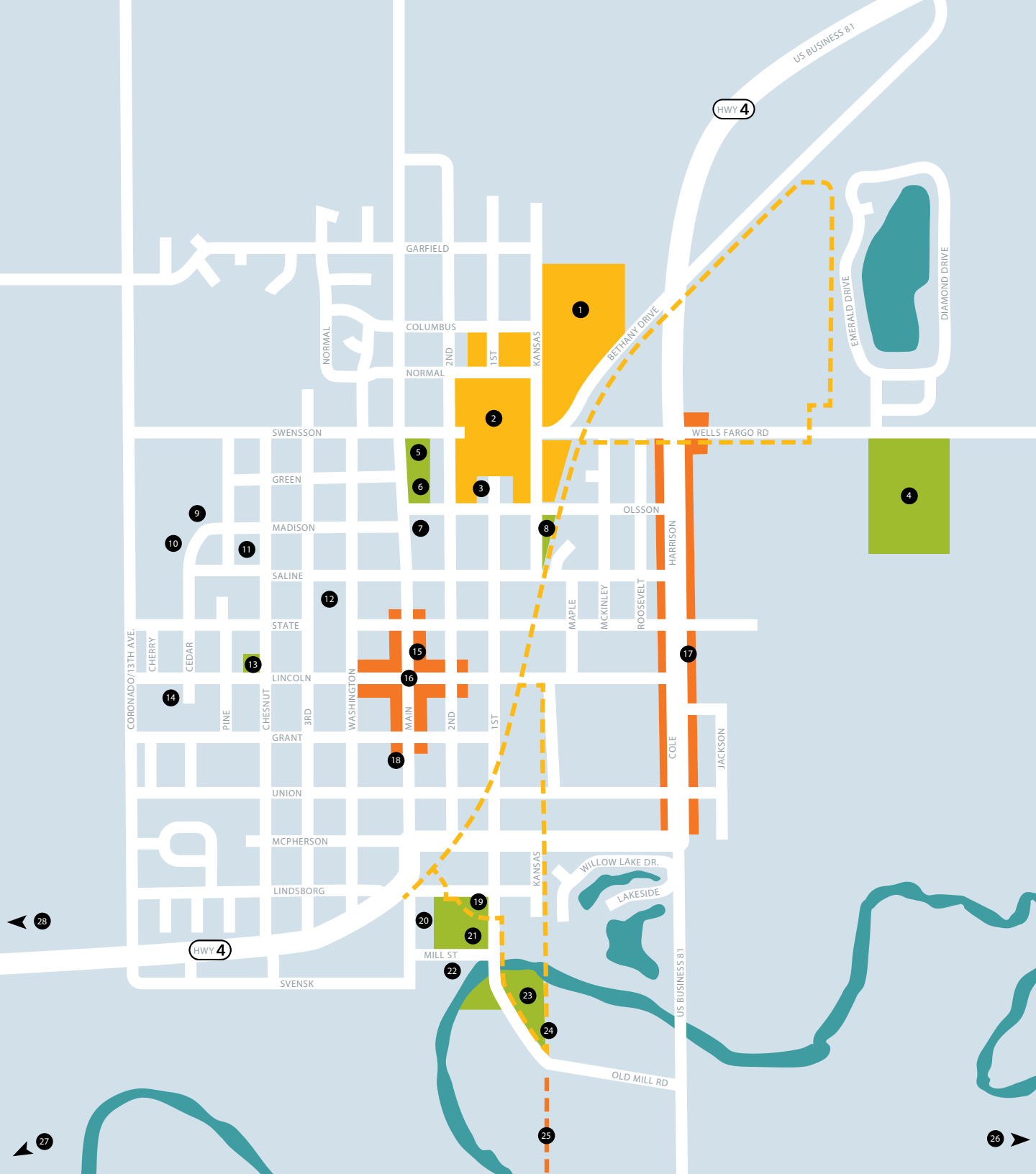
CHURCHES & CEMETERIES

- 4 Elmwood Cemetery
- 7 Bethany Lutheran Church
- 27 Freemount Lutheran Church

INFORMATION & ASSISTANCE

- 11 Bethany Home
- 14 Lindsborg Community Hospital
- 15 Travel Info Center





MEETING & EVENTS



SUNDSTROM CONFERENCE CENTER

Host your next training seminar, reception, reunion, wedding, meeting or social event at this new facility. Beautiful accommodations for groups of up to 400, with on-site catering and state-of-the-art audio visual equipment to ensure that your event will be memorable. Central dance floor for receptions and break-out session space available on request. Situated in the heart of downtown shopping and dining.

104 N. Main | 785-227-2015 | sundstromevents.com

QUESTIONS?

The Lindsborg Convention and Visitors Bureau is a valuable source of information on events, local organizations and businesses. Stop by or call our office with questions about your lodging needs, dining options and entertainment choices. We would also love to provide our guests with more insight into the history, arts and Swedish culture of Lindsborg.

The Lindsborg Convention and Visitors Bureau staff want to ensure that our guests have the most enjoyable experience possible while visiting Lindsborg. The CVB is a valuable source of information on events, local organizations and businesses. Stop by or call our office with questions about your lodging needs, dining options and entertainment choices. We would also love to provide our guests with more insight into the history, arts and Swedish culture of Lindsborg.

ENJOY YOUR STAY!

GETTING HERE...

No matter what time of year you are traveling, or where you are coming from, Lindsborg is accessible. Nestled in the Smoky Valley on Kansas State Highway 4, Lindsborg is a short four mile drive from Interstate 135, offering one-of-a-kind lodging and cuisine to travelers exploring the Prairie Trail Scenic Byway.



visit LINDSBORG
CONVENTION & VISITORS BUREAU

104 E. Lincoln, PO Box 70 | Lindsborg, KS 67456

Hours: Mon- Fri, 8 AM - 5 PM

cvbdir@lindsborgcity.org

Toll free: 888-227-2227 | Local: 785-227-8687

www.visitlindsborg.com

    VisitLindsborg

CERTIFIED TRAVEL INFORMATION CENTER

always open at 114 N. Main